



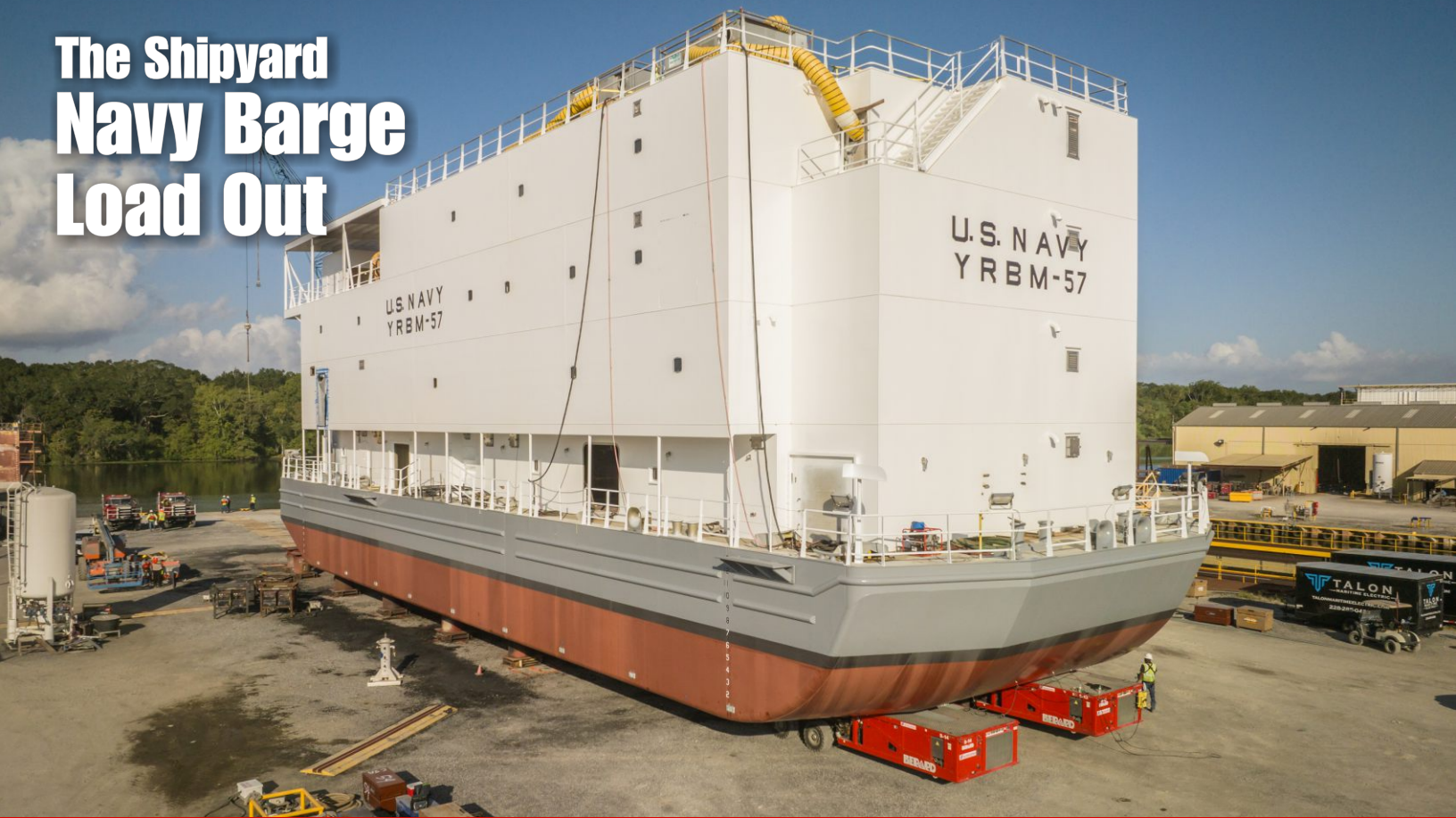
In This Issue:

BERARD
SINCE 1945

The Mega Transport Experts

- > The Shipyard | Navy Barge Load Out
- > Offload | Regen Vessel Offloads
- > Team Member Spotlight | Connor Pelous

The Shipyard Navy Barge Load Out



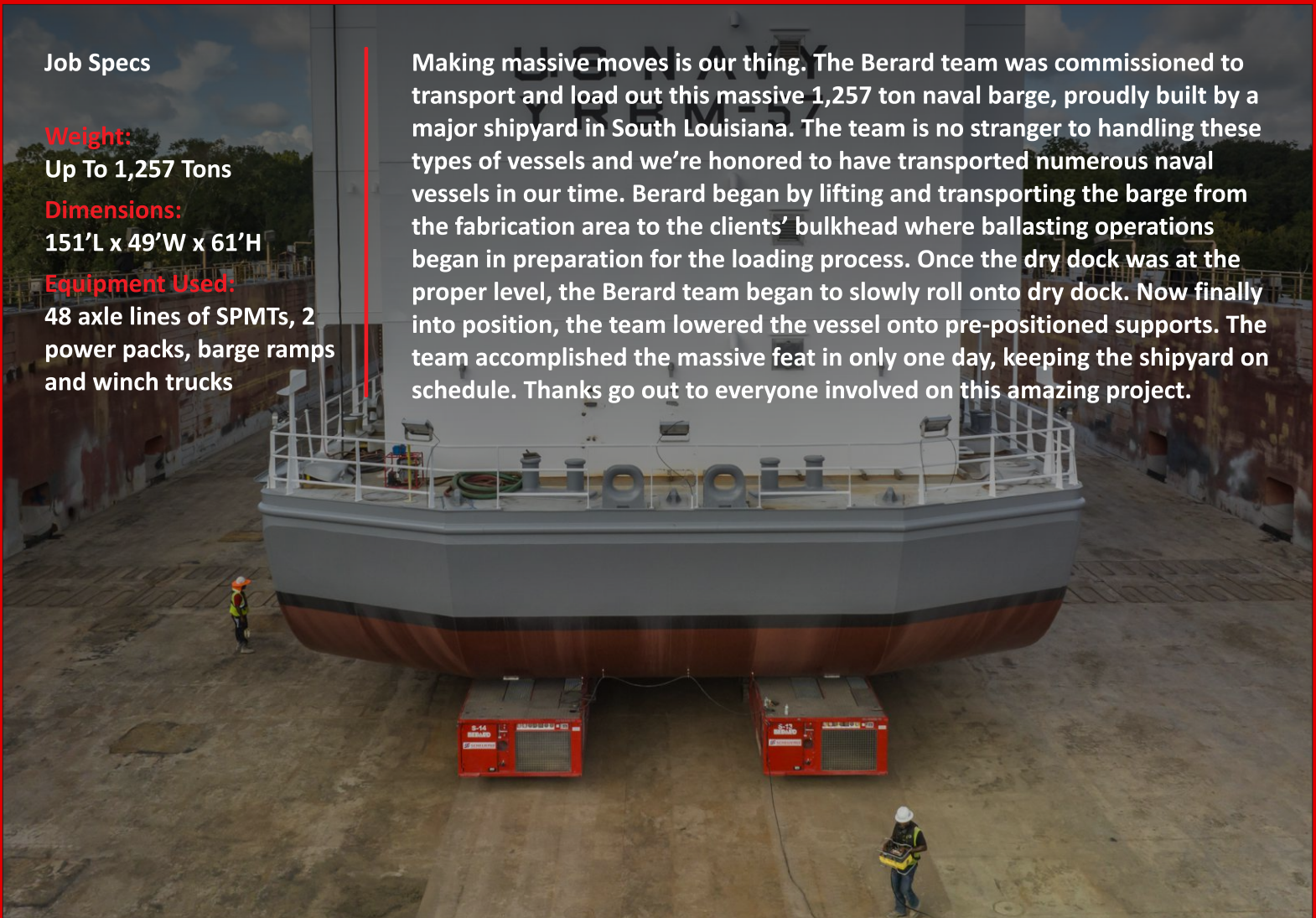
Job Specs

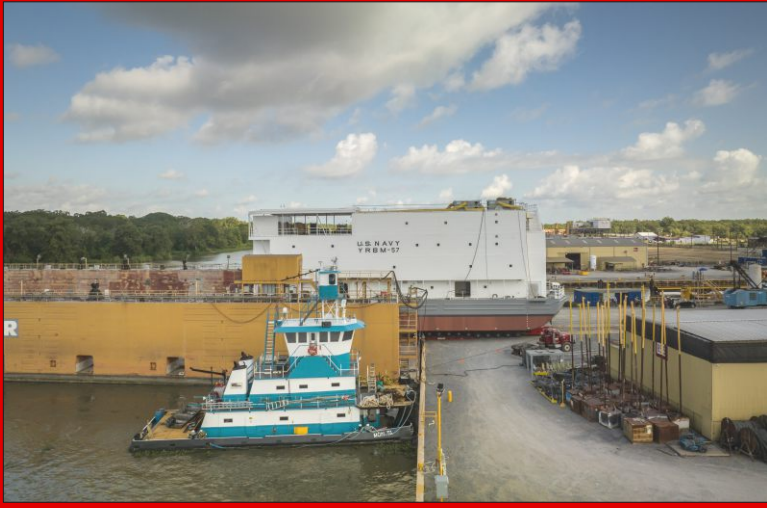
Weight:
Up To 1,257 Tons

Dimensions:
151'L x 49'W x 61'H

Equipment Used:
48 axle lines of SPMTs, 2
power packs, barge ramps
and winch trucks

Making massive moves is our thing. The Berard team was commissioned to transport and load out this massive 1,257 ton naval barge, proudly built by a major shipyard in South Louisiana. The team is no stranger to handling these types of vessels and we're honored to have transported numerous naval vessels in our time. Berard began by lifting and transporting the barge from the fabrication area to the clients' bulkhead where ballasting operations began in preparation for the loading process. Once the dry dock was at the proper level, the Berard team began to slowly roll onto dry dock. Now finally into position, the team lowered the vessel onto pre-positioned supports. The team accomplished the massive feat in only one day, keeping the shipyard on schedule. Thanks go out to everyone involved on this amazing project.





Offload Regen Vessel Offloads



Job Specs

Weight:

Up To 812,000 lbs.

Dimensions:

Up To 124'L x 17'W x 26'H

Equipment Used:

40 axle lines of SPMTs, 2 power packs, barge ramps and winch trucks

The Berard team was recently tasked with delivering four vessels to a south Louisiana project site from the Port of New Orleans. With the two identical heavier units weighing 820,000 pounds, Berard commissioned a 250' x 54' deck barge for the voyage to the roll-off dock. Berard engineers developed loading plans, lashing plans, and a barge trim and stability plan to ensure the barge was suitable for the inland journey. At the offload site, forty axle lines and two powerpacks of Scheuerle SPMTs were used to roll all four vessels off the barge to the lay-down area. In less than 16 hours all four vessels were unlashd, rolled from the barge, and set in storage.





Connor Pelous

Facility & Loading Team



Connor Pelous joined the Berard team in May of 2022. He does a little bit of everything at our main facility in New Iberia. One of those things is assisting our loading department with loading equipment assets needed for each job. You can also find him in our welding department, helping any way he can.

"I like that my job has a lot of variation that allows me to learn different skills. I like working at Berard because I'm learning multiple skills that will help establish me in the future," commented Connor.

In his off time, Connor enjoys vehicle restoration and riding his ATV.



> Birthdays @ Berard

Happy Birthday!

Happy Birthday to These Dedicated Team Members!

Randy Berard
Easton Berard
Jacob Boudreaux
Kevin Bouton

Keith Daigle
Darryl Doucet
Jamie Haughton
Tina Lasseigne

Crystal Touchet